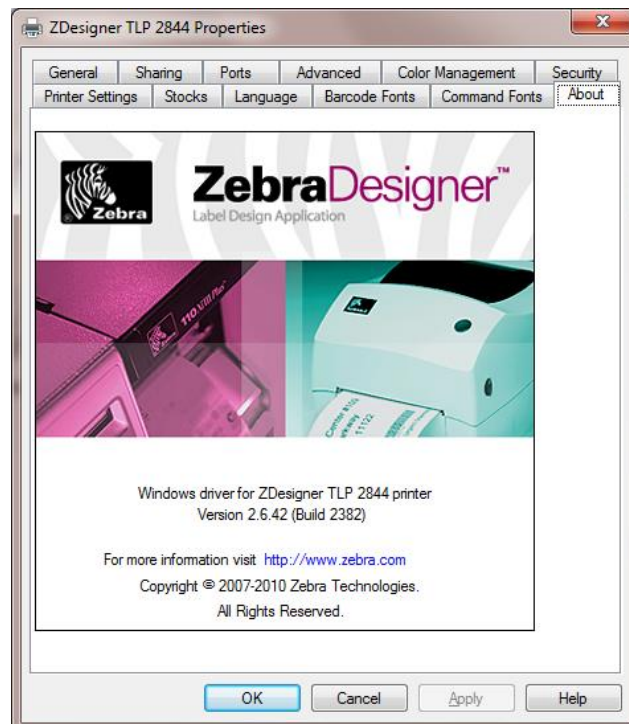
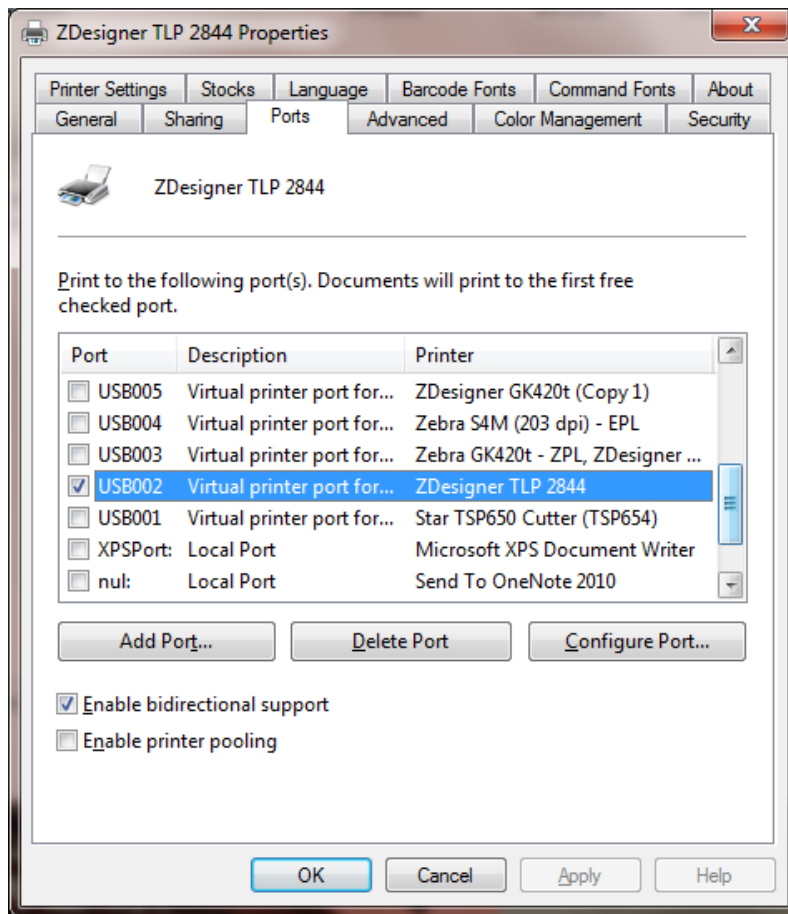
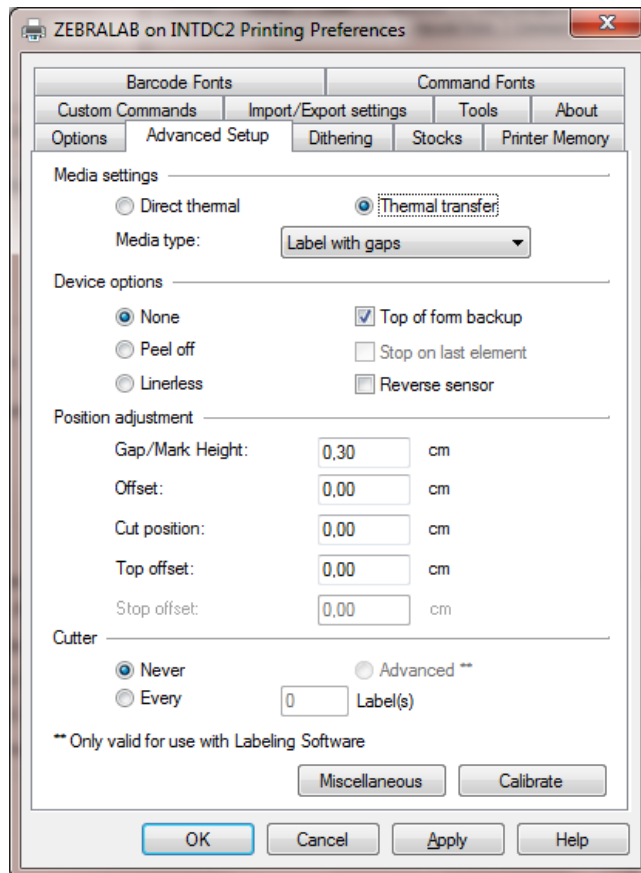
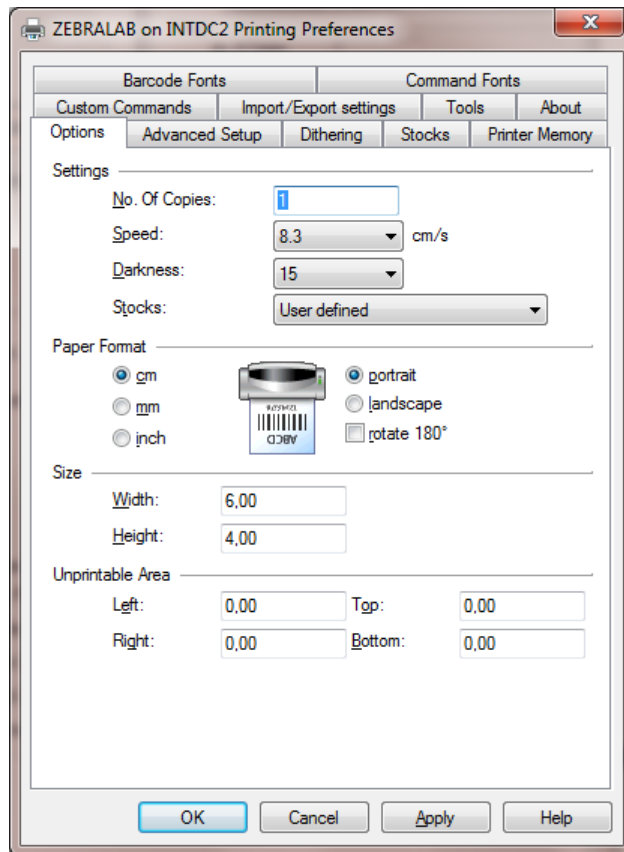


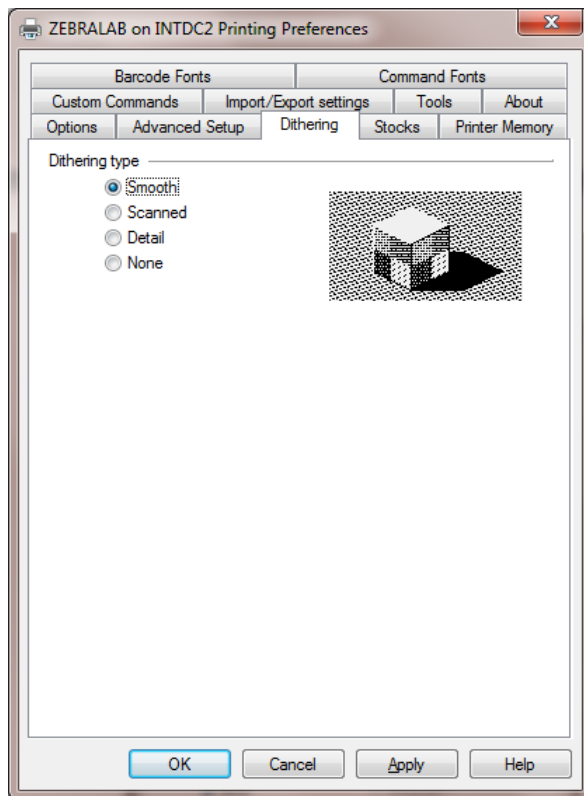
Proverite da li je obeležen samo jedan ispravan drajver na sistemskom portu koji je u upotrebi.
Na slici je obeležen port USB002 i drajver ZDesigner TLP 2844 (kod vas će biti drugačije USB001 ...)



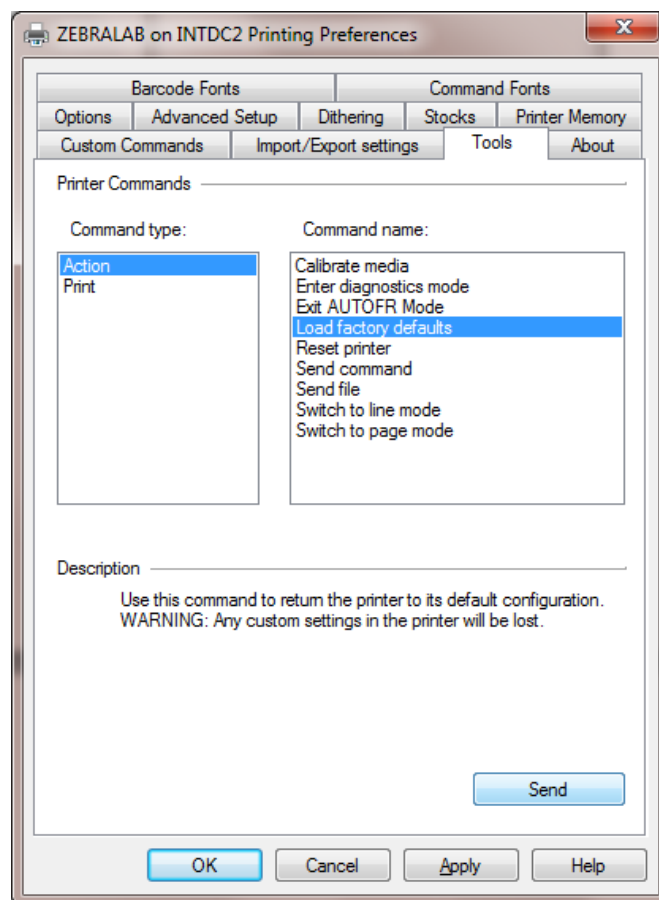
Kod odabranog štampača za nalepnice – ZDesigner TLP 2844 desnim klikom miša odaberete **Printing Preferences**.

Podesite vaš drajver kao na slikama dole:

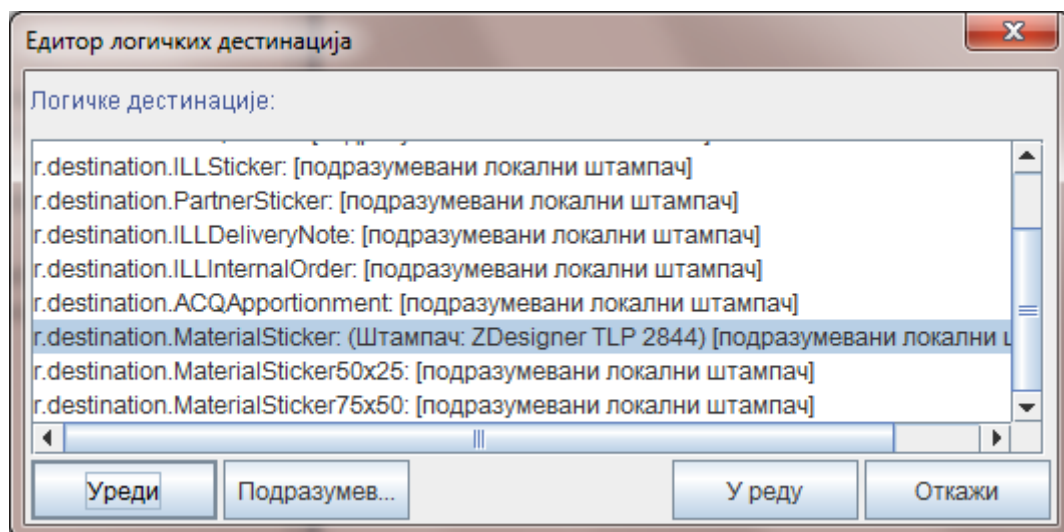
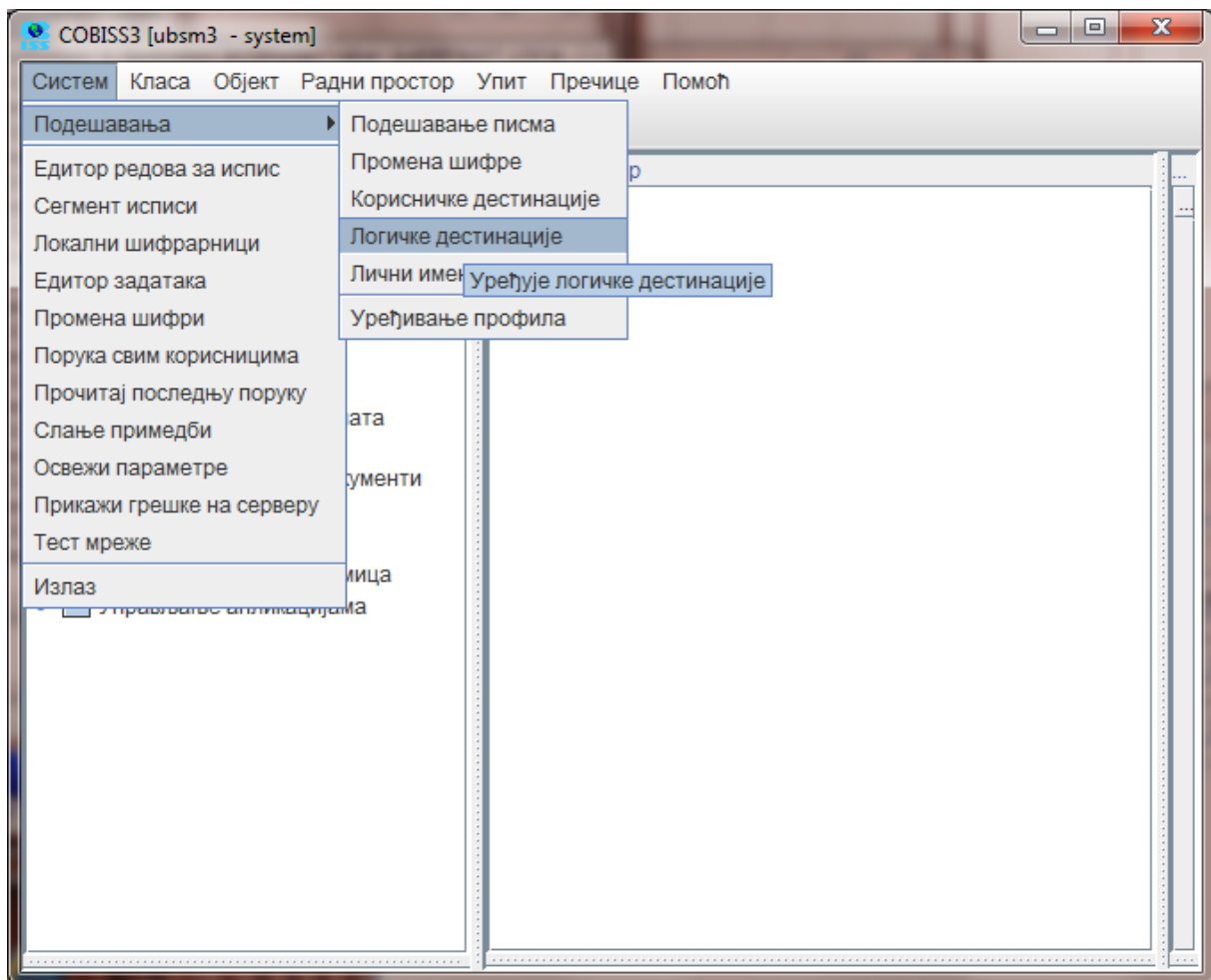


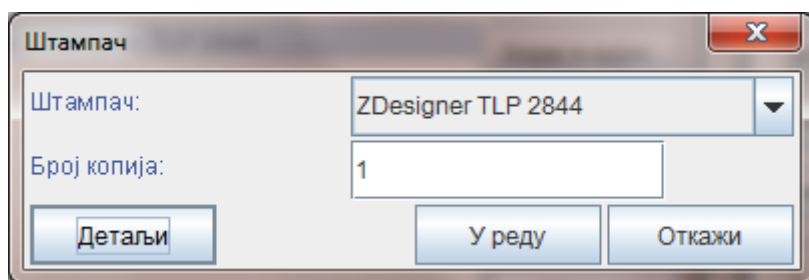
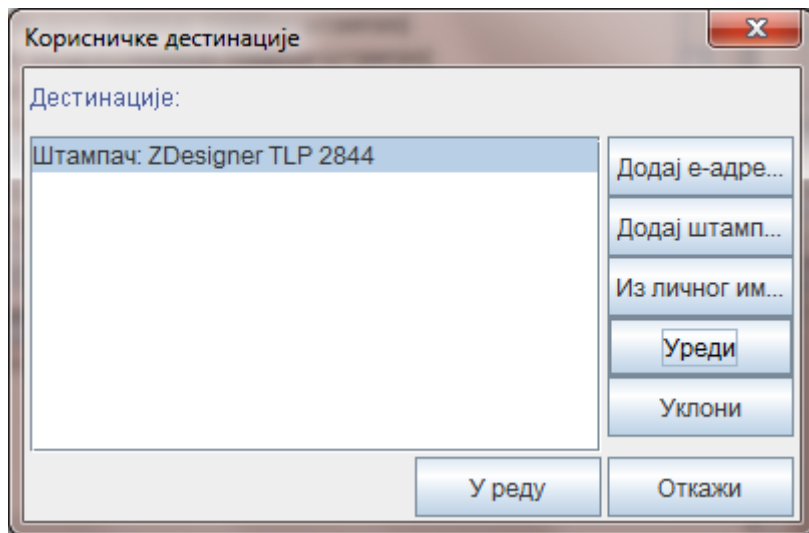


Inicijalizacijski parametri štampača:



Pre štampanja u COBISS3 moraju se podestiti logičke destinacije:





Режим штампања: **Графички**

